

# Endüstride, Ticari ve Özel Konutlarda Isıtma, Havalandırma, Soğutma Çözümleri!...

[www.ozgurmuhendislik.com](http://www.ozgurmuhendislik.com)

## Industrial, Commercial and Private Homes

## Heating, Refrigeration, Ventilation and All Mechanical Plumbing Solution ! ...



Meşrutiyet Mah Buket Sok No:9 D:6 34363 Nişantaşı Şişli İstanbul

Tel : + 90 212 291 10 28 / 29 Faks : + 90 212 291 95 49

E-Posta : [ozgurmuhendislik@ozgurmuhendislik.com](mailto:ozgurmuhendislik@ozgurmuhendislik.com)



The company was founded in 1986 with the aim of serving as a company committed to the mechanical sector. Eight years in this direction various heating, cooling, ventilation, air conditioning, mechanical installations and infrastructure applications made.

**Özgür Engineering** has concentrated on the building installations since 1994 to specialize in ventilation and air conditioning in all areas instead of being superficial and mechanical installations of our sector in Turkey first insulated aluminum market in order to bring innovation and application of Channel Sales. However Rectangular Plate Channel, stainless and galvanized round Channels Oval Channel, PVC for special purposes corrosive environments, PP, FRP duct and textile ducts, Induction Device (also Spilota), Chillers, Ventilation, Air Handling Units, Dust Collection Plants, Fan, Fan Coil and Split Air and Air Duct Cleaning offers the latest innovations in HVAC services to users.

However, the Mechanical Systems Engineering Sector, Fire Systems, Compressed Air, Water and Waste Water Systems, Natural Gas Installation, Boiler, Pipe Insulation Technology and Environment and Water Treatment Plant has been operating in the area. Called mechanical systems in industrial plants ; Steam boilers and fittings, hot water boilers, thermal oil installations, chiller units and cooling water installations, Compressors apartment mounting and compressed air systems, fire suppression systems, Air handling units, air-conditioning and ventilation work projected manufacturing, including making assembly and commissioning sunmakta turnkey solutions to our customers.



Mechanical installation of underground transmission line in infrastructure works, fire hydrants and steel high-pressure lines are lines on which we deliver our projects as well as electro-fusion welded HDPE lines as or received.

As **Özgür Engineering**, we offer our turnkey projects and applications to our esteemed customers with precision sensors and Automation and Control Electrical MCC DCC panels of our factories or PC system with the desired climate control controls of all our mechanical systems in the environment.

### **Business Segments**

- All Factories
- Power Plants
- Hospitals
- Airports and other terminal buildings
- Shopping Center
- Business Centers
- Fair Grounds
- Residential Villa
- Military Facilities
- Hotels, Resorts,
- Bulk food production facilities,
- Restaurants and cafeterias,
- Chemical Sector
- Battery Plant
- All facilities that use oil production
- Meat and fish processing plants,
- Treatment plants, city waste waters and wastewater treatment plants
- slaughterhouses, slaughter houses,
- Auto repair and maintenance



## Inulated aluminum AIR DUCT MATERIAL PROPERTIES;



### Pre-insulated aluminum duct systems:

Insulated with 25mm glass wool traditional channels.(thermal conductivity =  $0,038W / m ^\circ C$ ) P3ductal (pitre panel is used)8mm polystyrene 's traditional channel isolated(thermal conductivity =  $0,033W / m ^\circ C$ )The internal temperature of  $15 ^\circ C / 30 ^\circ C$  outside temperature. **Energy efficiency:** excellent thermal insulation and optimum sealing, the air distribution unit increases efficiency by ensuring operation at maximum capacity, reduce energy consumption.

**P3ductal:** P3ductal technically superb, the establishment of pre-insulated aluminum ducts system. Technically, it meets all the expectations of those who want to establish a modern air distribution system in terms of economic and structural properties.

**Material:** Non-coated aluminum sheet metal, insulation material should consist of closed cells inside the panel.

**Equipment:** production and has been specially designed for all phases of installation.**Know-how:** identifying information and technical support to contractors and consultants.



**Excellent insulation:** constant and continuous at every point of the channel, bio-compatible thanks to a special closed-cell insulation material with low thermal conductivity ( $0,022W / m ^\circ C$ ) provides, 25mm aluminum foil with two surface of the panel. According to 18% of glass wool insulation, 9mm, 58% compared to rubber foam providing more energy efficiency.

**Hygiene and high air quality:** in no way fragmentation as a result formed the surface of aluminum-coated, crumbling insulation layer and the foil surface thanks to combination of because of the air in the channel material being translated system pollution, corrosion or health-threatening particles out of the question. It provides a healthy environment for many years, quality construction.

**Quiet Operation:** sandwich structure (aluminum-proof aluminum) provides an excellent sound-proofing.

**Echo and chills:** is absorbed by the insulating material; assure peace in this environment.

**Final solution against condensation: Panels** creates the ultimate solution against condensation occurs due to a high thermal insulation values and minimum vapor permeability.

**P3ductal:** ideal for tough applications. Different panel types, enabling full adaptation to the harsh conditions of food processing plants, ideal for use in the seaside resort and exterior installations.

**P3ductal;** panels, plates (confidential proprietary flange connection) is an excellent system and application has been tested thoroughly with help team members.**Incredible Lightness:** Panel weight  $800g / m$  Galvanizing is one tenth of the hair lightness.

**Air Distribution:** Areas of expertise 40 years of experience with innovative, durable and high competitiveness was provided to develop a product. P3 efficiency and reliability has been proven by the ISO 9002 quality certificate and was preferred in 32 countries worldwide.

**Competition:** P3ductal system offers numerous benefits over traditional systems relative to the channel in terms of production and productivity in mounting stage. It makes it easy to add additional system or replacement of existing systems.

**Rapid application indisputable:** very fast fabrication and installation of the panels in  $20 \times 1200 \times 4000$ mm size.

**Transport the Savings:** big profits in construction of cut and prepared for transportation by closing panel with the machine.

**Lightweight and long:** the cost of labor in the manufacture and assembly of Duct falls short period of time.

**High Sealing:** High thermal insulator and sealed fasteners to have panels with air leakage and significantly reduced energy losses, channel production and the labor cost spent for installation of the old system to the relative large savings sağlanır.gizl associated flange m<sup>2</sup> at 1100 Pa pressure 0,25 l / s air leakage (by SMACNA standard klassen C) provides 10 times better seal clamped by the channel connection.

**Aesthetic and space saving:** string privilege reviewing your spaces with decorative appearance is polished aluminum surface can be painted if necessary.

**Longevity:** aluminum coating coupled with the insulating material to provide health and stiffness.

Even in private practice deformation indicates an effective resistance to wear and tear. Duct application forms and material types, simplifies maintenance and makes all kinds of financial savings.

**Safety and energy saving:**

**Security:** flame coated with 12 separate komponentd cellular structure consisting of carbon and aluminum foil surface coating is not affected much due immediately. As with pure polyurethane material does not melt and drip. Therefore, flame spread is very low. P3ductal by important international organizations have the quality certificates on the fire reaction. (ISO 9002, SMACNA, BS 476, Laboratoire National d'essai, sudden Istituto Giordano LFS).

**Friction Loss:** A small number of flanges and limited hard surfaces, linear saves energy by keeping the most minimal friction. Channels may allow air leakage in m<sup>2</sup>: Lt / sec Pressure: PA

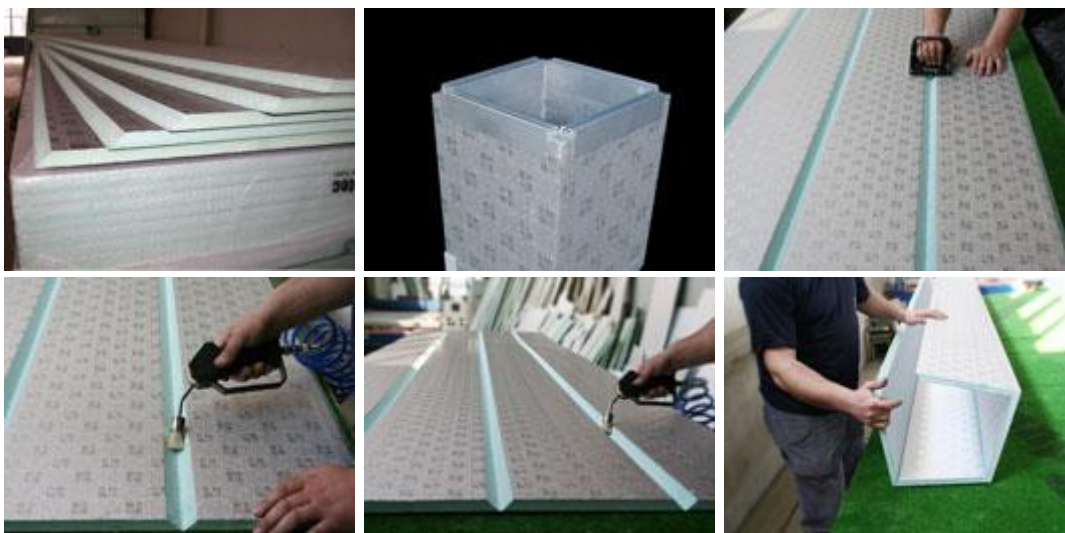
**CFC:** it has proven to produce harmful gases to the nature of international documents and certificates from the P3 panel.

Plumber great support: to facilitate the work of plumbers is quick, easy and what they can measure the channel P3duckwar design software program has been developed.

**Easy design:** P3 Duckware specially developed software through channel going down the minimum time required for design and calculation provides error-free ease of calculation.



## pitre duct production photos





## Our panel types ;

### 15HP21 Piral HD Hydrotec Panel

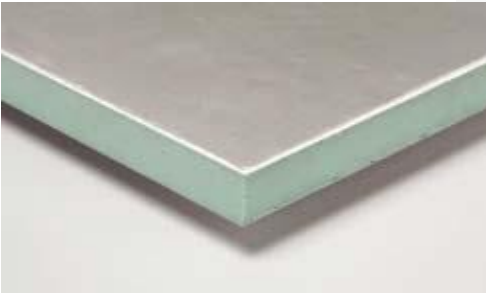


Panel size 4000 x1200 mm panel thickness of 20.5 mm  
Density  $52 \pm 2$  kg / m<sup>3</sup> Interior Exterior aluminum thickness 80/80 micron  
Thermal conductivity of  $\lambda = 0.022$  W / (m ° C) Aluminum shape  
Internal External Rough



- \* Other Models: 80/200 Panel thickness 20.5 mm  
Aluminum shape Internal External Rough
- \* Other Models: 80/200 Panel thickness 30.5 mm  
Aluminum shape Internal External Rough
- \* Other Models: 60/60 Panel thickness 20.5 mm  
Aluminum shape Internal External Rough

### 15HL21 Piral HD Hydrotec smooth panel

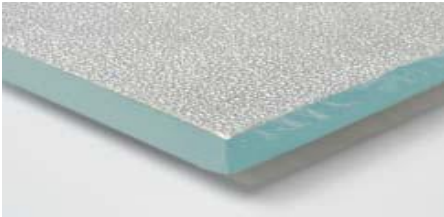


Panel size 4000 x1200 mm panel thickness of 20.5 mm  
Density  $52 \pm 2$  kg / m<sup>3</sup> Interior Exterior aluminum thickness 80/80 micron  
Thermal conductivity of  $\lambda = 0.022$  W / (m ° C) Aluminum shape  
smooth / rough



- \* Other Models: 80/200 Panel thickness 20.5 mm  
Aluminum Type Plain / Textured
- \* Other models: 200/80 Panel thickness 20.5 mm  
Aluminum Type Plain / Textured
- \* Other models: 200/200 Panel thickness 20.5 mm  
Aluminum Type Plain / Textured

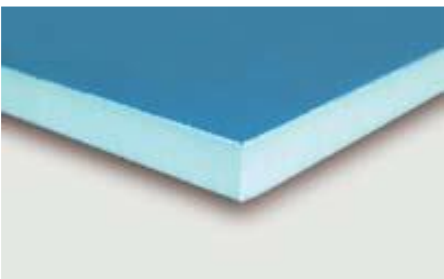
### 15HE21 Piral HD Hydrotec panel coupled with polyester film



Panel size 4000 x1200 mm panel thickness of 20.5 mm  
Density  $52 \pm 2$  kg / m<sup>3</sup> Interior Exterior aluminum thickness 80/80 micron  
Thermal conductivity of  $\lambda = 0.022$  W / (m ° C) Aluminum shape  
Textured / Rough



### 15HN21 ABT Piral HD Hydrotec Özel Antibakteriyel Panel

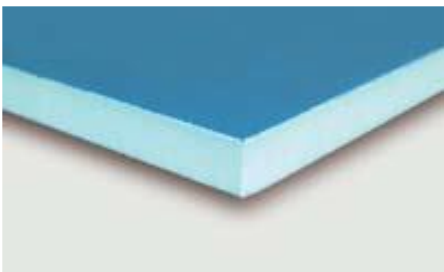


Panel size 4000 x1200 mm panel thickness of 20.5 mm  
Density  $52 \pm 2$  kg / m<sup>3</sup> Interior Exterior aluminum thickness 80/80 micron  
Thermal conductivity of  $\lambda = 0.022$  W / (m ° C) Aluminum shape Plain / Textured  
Antibacterial applications: the inside of aluminum



Aluminum layer, canal cleaning and against losses that may occur during maintenance operations shows extremely durability. Aluminum interior trim and anti-bacterial applications that require high hygiene entering the room is suitable for the manufacture of channels to be used in outer space.

### 15HN21 Piral HD Hydrotec Antibakteriyel Panel



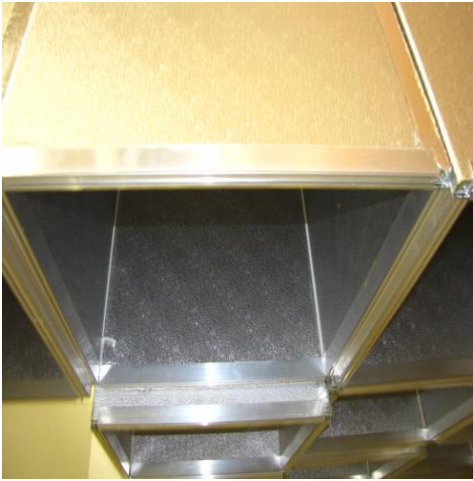
Panel size 4000 x1200 mm panel thickness of 20.5 mm  
Density  $52 \pm 2$  kg / m<sup>3</sup> Interior Exterior 200/80 micron thickness aluminum  
Thermal conductivity of  $\lambda = 0.022$  W / (m ° C) Aluminum shape Plain / Textured  
Antibacterial applications: the inside of aluminum



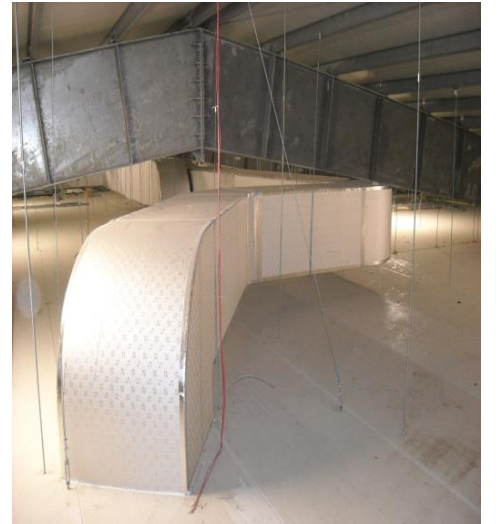
Aluminum interior trim and anti-bacterial applications that require high hygiene entering the room is suitable for the manufacture of channels to be used in outer space.



**Insulated Aluminum Air Duct Application Pictures;**









## **READY TO AIR DUCT RECTANGULAR PLATE**

Air channels TSE certified galvanized steel, aluminum and stainless steel plates, sealed with flange and corner pieces are manufactured.

### **Production:**

Duct and fittings materials, in order to minimize wastage of the right size computer will automatically cut off the plasma bench.

\* Duct manufacturing 150-2200 mm. the range of the machines is done automatically.

\* Ducts, fitting parts are covered by automatic seam machine.

\* In order to seal with silicone mastic.

### **Sealing:**

\* With the use of high quality in order to seal the flange.

\* Flange and corner pieces are combined in special machines.

\* Each piece shall be checked before delivery.

SMACNA C Class to reach high sealing capability.



### **Steering Board**

Depending on the width of the elbow, the pressure loss and to prevent air turbulence routing blades are mounted as standard.

### **Duct Empowerment Systems**

Reinforcing steel bends are manufactured as standard in all Duct s, the machine is being given. However, on request extra reinforcement channels can be done.

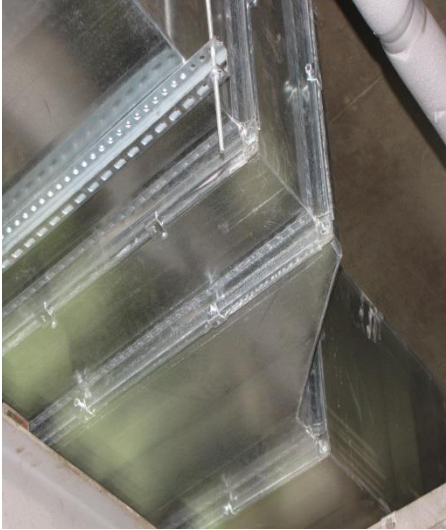
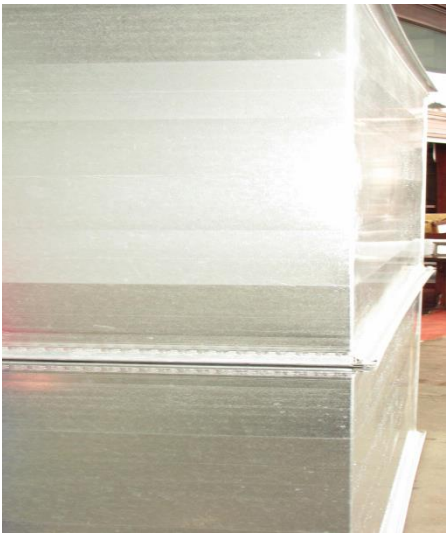
\* Duct exit portals of the pipe support rod connection is made. Cross-connection of pipes to each other and bolt nut connection made with a special plastic clamp.

\* Support profiles are installed along the Duct.

### **Self-Flange Rectangular Plate Duct Application Photos**







## CIRCULAR AIR DUCTS

Warranty circular air ducts, SPIRO SYSTEM SMACNA, ASHRAE, EUROVENT are manufactured according to the norms.

Manufacturing Options;

- \* Galvanized - Aluminium - Stainless Steel material
- \* Pass-type junction
- \* Seal tees
- \* Internal or external fabricated PE-Rubber-Insulated
- \* Double-Walled, Glass Wool - Rock Wool Insulated
- \* Asking Electrostatic powder painted RAL codes
- \* Strength of single-, double and triple rib system to increase manufacturing wide range of options, including



Manufacturing;

All products are channels, the range of  $-30^{\circ}\text{C}$  to  $100^{\circ}\text{C}$  are used.

3000 Pa. used to the pressure.

There is no measure for the error produced by computerized machines.

Is a very fast assembly on site, saving time and labor.

Minimum air leakage, providing maximum energy savings.

Circular air vents 3 and 6 m. are manufactured in standard sizes.

Standard diameters (mm):  $\text{Ø}100\text{-}\text{Ø}125\text{-}\text{Ø}150\text{-}\text{Ø}160\text{-}\text{Ø}180\text{-}\text{Ø}200\text{-}\text{Ø}224\text{-}\text{Ø}250\text{-}\text{Ø}280\text{-}\text{Ø}300\text{-}\text{Ø}315\text{-}\text{Ø}355\text{-}\text{Ø}400\text{-}\text{Ø}450\text{-}\text{Ø}500\text{-}\text{Ø}600\text{-}\text{Ø}630\text{-}\text{Ø}710\text{-}\text{Ø}800\text{-}\text{Ø}900\text{-}\text{Ø}1000\text{-}\text{Ø}1120\text{-}\text{Ø}1250$

Trays are used in anti-bacterial sealant

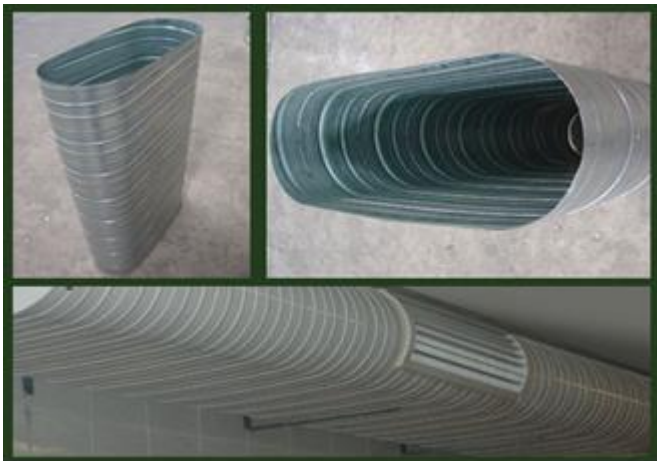
### Oval Channel;

Oval air ducts, ventilation systems are preferred because of the many benefits of use, and technical.

Fold difficult to bend, Easy Fold Elbow, TEE, Reducer, Tee, Plug (Dump), Sleeve, Trousers, Muffler, Clamp, Flange, Hanger Systems standard productions, and the desired air duct system cnc machines parts are made of any kind that may be needed .

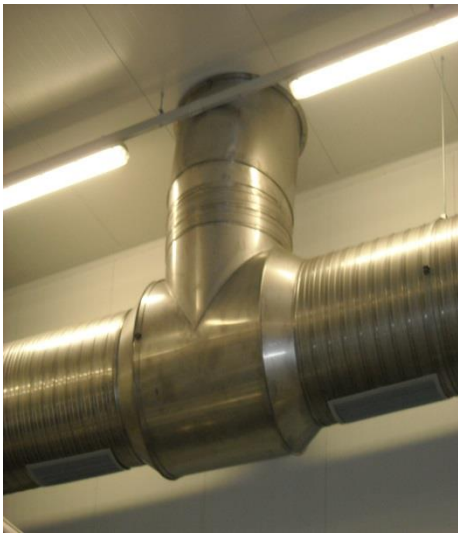
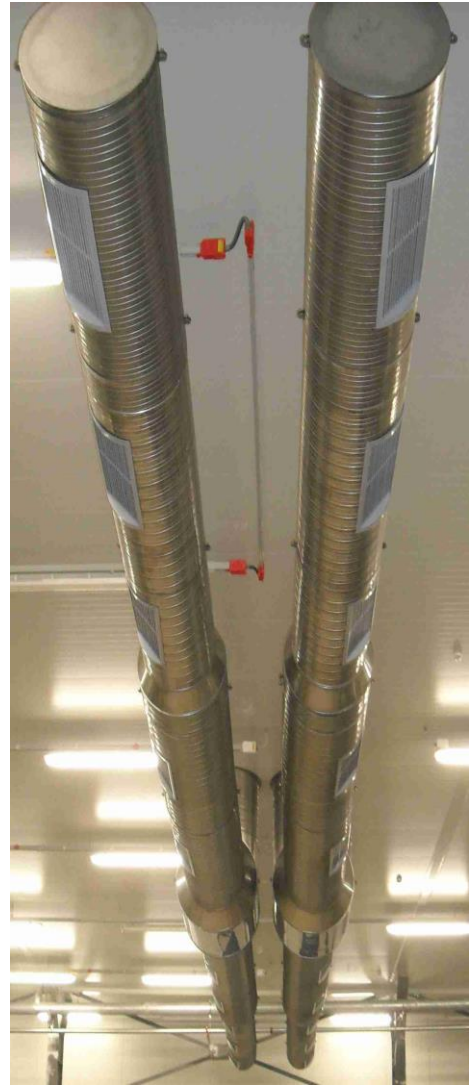
Manufacturing Options:

- Galvanized - Stainless Steel material
- Plug-type junction
- Seal tees
- Internal or external PE-fabricated rubber or acoustic insulation
- The desired RAL codes Electrostatic Powder Paint
- Strength of single-to double or triple rib system to improve the manufacturing wide range of options, including





# Pictures of Stainless Steel Circular Air Vent





## TEXTILE DUCT

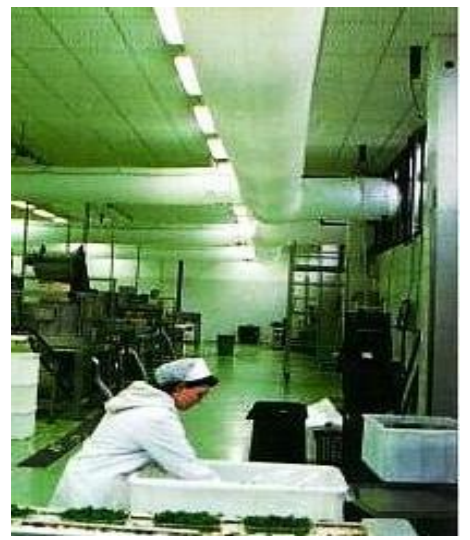
Textile duct systems, heating, cooling and ventilation applications are quite efficient. Our solutions are designed tailor made to meet the customer's needs. Now with CFD simulation (Computational Fluid Dynamics). Possible to estimate the ambient air temperature differences and air speeds. CFD Textile Duct architects, engineers, and contractors to offer Projecilere tool. Textile air duct choice, price advantages as well as maximizes the comfort of indoor air, buddha customers again and again in order to go back and broad implications are clearly seen.

### TEXTILE AIR DUCT

- \* Channel as a form of full-and half-circles,
- \* Different color options
- \* Insulation does not require
- \* The plenum volume reduction effect due to the nature and flexible material.
- \* Quick and easy installation
- \* Low transport costs
- \* Standard series, glass wool or polyester PVC coated material surface, Class 1-2 office series is made of polyester fibers, Class1
- \* Class 0 series is made of silica and aluminum, Class 0-1-2 series of fire according to the manufacturing,
- \* Standard mounting with wire rope, optionally with aluminum rail
- \* Low-speed (0.1 m / sec.) Do not bother uniform air distribution
- \* Due to the hygienic wash in, full-and half-circles as a form of channel choice, 100% polyester material,
- \* % 95e moist air blowing up facilities,
- \* 5 m.de combination of a zipper
- \* Due to the hygienic wash in,
- \* Standard RAL scale color









## PVC, PP and PE AIR DUCT

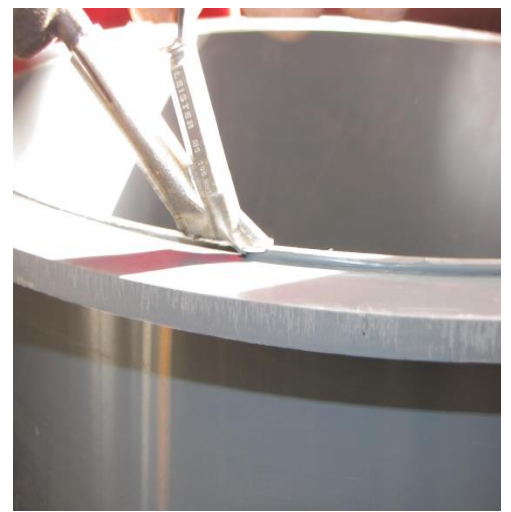
Air Duct productions of 4 mm-5 mm PVC, PP flanged or welded in the workshop are made. Duct flanges 40 \* 8 mm.thick.

Rectangular ducts of different diameters;

- \* Round channels  $\varnothing 1500$  mm up to  $\varnothing 110$  mm diameters
- \* Air duct flaps
- \* Hood
- \* Rectangular and cylindrical private parts;
- \* 3-piece 45 ° elbow, 3 piece, 90 °, 7 ° parçalı90
- \* A part of the 30 ° and 90 °
- \* A part of the symmetrical 60 °
- \* Eccentric and Concentric Reducers are produced.

### Areas of Use

Flammable and Explosive Atmospheres Exproof  
Steam Krozif Air Environments  
Laboratory fume hood suction apertures  
Acid and Chemical Air Tranfers  
Chemical Gas Cleaning Plants



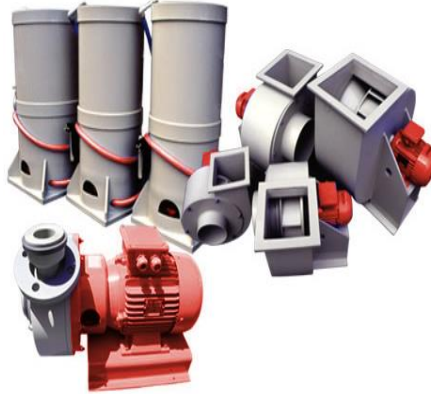
## FANS

Fan productions upon request (PVC, PP, PE, PVDF) materials are manufactured in the desired capacity. While the production of Fans, Belt Driven and Direct motor driven

- \* Two models are produced
- \* Chemical resistance
- \* Quiet Operat

Areas of Use:

Acid and Chemical Air transfers  
Flammable and Explosive Atmospheres  
Exproof  
Steam Krozif Air Environments  
Laboratory fume hood suction apertures  
Chemical Gas Cleaning Plants

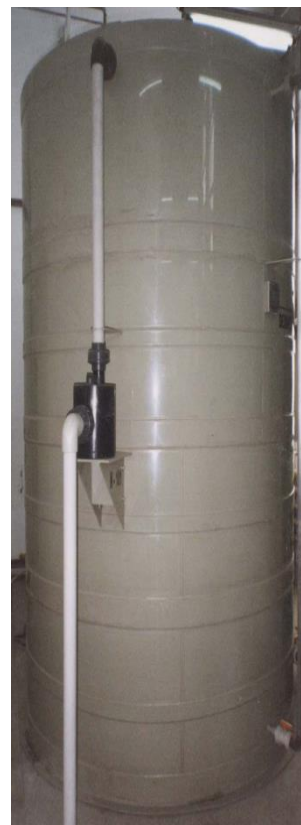


## TANKS

While the production of tanks, (PVC, PP, PE, PVDF) materials are manufactured from extruder. Level gauges are mounted on transparent PVC" is from.

- Bulk food production facilities,
  - Restaurants and cafeterias,
  - The battery plants
  - All production plants using oil,
- Water treatment plants, municipal waste water treatment plants  
Acid storage tanks  
The chemical reaction tanks  
Acidic plating baths  
Chemical precipitation tanks are

Tank desired level is applied





## MIXERS

SS 316 stainless steel blades and shaft mixer plastic productions in general. Direct motor driven, articulated, and the gear types are manufactured. In addition to chemical treatment plants Crawler mixers and scrapers

- acid and filtration of chemical toilets
- Acid and chemical mixer
- direct drive or coupling connection
- IP55 protected motor 'malatlarımız include flanged connection.



## GAS WASHING

Gas Washer units (PVC, PP, PE, PVDF) materials, tower type, Column are manufactured in three models, including the type and horizontal type. The tower filled with differend system.



## VERTICAL SUBMERSIBLE PUMP SHAFT

PVC - PP material

- Acid and chemical transfers
  - PVC & PP material centrifuge housing
  - chemical industry, electro-plating units
  - "galvanized steel and chrome plating baths
  - electrical safety insulated motor shaft
  - Self-priming glandless
  - For use with continuous
  - direct drive coupling and
  - long life, high efficiency
  - Ease of installation and assembly
  - IP55 protected and epoxy coated motor
- Eccentric and Concentric Reducers are produced.



# PLANT , FANS and CHILLERS

## Cell Extractors

500 m<sup>3</sup> / h to 100,000 m<sup>3</sup> h of flow rates are produced in different sizes as standard.

- Cell panels, 25 mm or 50 mm thick rock wool, glass wool or coated with polyurethane.
- Applications: Offices, Offices, Cafeteria, Restaurant, Meeting Rooms, Supermarkets, Factories ...
- Low energy with maximum efficiency
- acoustic insulation against sound
- Vibration-free operation



## Air Conditioning Plant

Air-conditioning plant, intermediate model consists of 14 main and 42 and 1,500 m<sup>3</sup> / h - 140,000 m<sup>3</sup> / h range, depending on the needs of heating, cooling and ventilation systems, flexible solutions.

### Area of users :

- Hotels
- Hospitals
- cinema
- Restaurant
- Fairgrounds
- All Plants
- Chemical Sector
- automotive
- Shopping centers
- Houses
- textile mills
- Food and Paper Industry





## Compact Cell Extractors

1500-10000 m<sup>3</sup> / h flow rate within the range of 5 different types of assembly-disassembly, maintenance, and ease of service with optimal size saves space. Quiet-running fan-motor group (direct drive double inlet forward curved fan) Special sound insulation ISO 9001, CE, TSEK certificate

Used in;

Work places, offices, cafeterias, grocery stores, restaurants, meeting rooms ...



## AIR COOLED CONDENSER GROUP

### Cooling capacities

• 8.750 kcal/h - 166.000 kcal/h (10-193 Kw) 8.750 to 166.000 kcal/h (10 to 193 Kw)

### Varieties

- Air cooled - Water cooled
  - Addition of heating coil ,Monoblock or splitsystem
  - Automatic humidity controlled air conditioners for laboratories and testing rooms.
- Custom made upon customer requests suitable for special needs. Special units with and special dimensions.

### Advantages

- Economical energy
- Quiet and noiseless operation
- Easy to service
- One year warranty
- Full automatic
- Working with new refrigerants(R-407C, R410a, R-134a, R404a) and different voltage





## Chillers

Air-cooled chillers are the right choice for tight temperature control in virtually any application.

Trane also offers complete, factory-assembled **scroll** liquid chillers that offer ease of installation with wiring and microprocessor controllers providing maximum operating efficiency. Our compact chillers install easily and quickly into most building layouts, making them ideal choices for retrofit or new building designs.



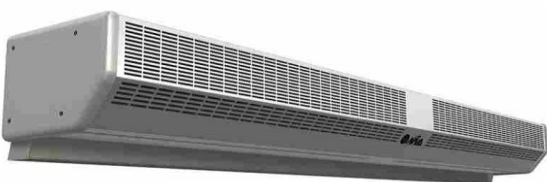
## AIR CURTAINS

Purpose of

The air inside the storage space. In winter, cold air, warm summer air, dust, moisture, insects and do screening for a variety of gas to prevent air from entering.

Applications

Stores, groceries and supermarkets, cafes and restaurants, hotels, gyms, business and shopping centers, banks, exchange offices, jewelers, Cold Storage, Training, and many enterprises used the confidence and comfort.





## Duct Fans

### Circular Duct Fan

Home Use (bathrooms, kitchens, toilets, rooms), Commercial Use (Office, cafes, bars and restaurants), Industrial Use (equipment cooling, spot ventilation, workshops and designated smoking areas .. etc)

#### Capacity

250m<sup>3</sup>/h- 1800m<sup>3</sup> / h

Features: Designed for direct mounting circular ducts of different diameters. Fans with outboard engine, includes backward curved rotor. Single phase (220V/50Hz), B3, IP44 includes the engine, all models can be operated with speed switch.



### Single Suction, Self-motor

#### Capacity

300m<sup>3</sup>/h- 5000m<sup>3</sup> / h

Features: Designed for quick and easy installation. Fana has inspection cover for 'em. Can be easily mounted on walls and ceilings. Single phase (220V/50Hz), IP54 type closed motorized, low sound levels are



### Double Suction, Self-motor

#### Capacity

1500m<sup>3</sup>/h- 5000m<sup>3</sup> / h

Features: Designed for quick and easy installation. Fana has access to the inspection cover. Can be easily mounted on walls and ceilings. Single phase (220V/50Hz), IP54 type off the motor. There is a low noise level. Flange and flexible couplings can be provided on request.



### Single Inlet, Rare Poultry

#### Uses

Use in a wide variety of cuisines, including commercial and parking areas.

#### Capacity

3000m<sup>3</sup>/h- 20.000M<sup>3</sup> / h

Features are designed for quick and easy installation. The fire smoke extraction fan can be used as the engine of change.



## COOLING TOWERS;

### Radial Fan Towers

#### Capacity

170.000KCAL / H - 1.400.000KCAL / H

#### Features:

Specially designed and quiet, fans are made of corrosion-resistant material is used. Wire mesh to prevent the entry of foreign matter into the suction fan there, the engine is being protected from rain and external factors. Rapid as standard painted, galvanized steel sheets produced by the body completely. Plastic fill and eliminators are used.



## Axial Fan Towers

### Area of Uses

Air conditioning, refrigeration, plastic processing machinery and various processes.

### Capacity

30.000Kcal/h- 650.000Kcal / h

Features: Hot Dip galvanized or epoxy painted hair is produced.

Galvanized steel blade axial fans are used.

Direct coupled or belt pulleys are driven.

High-performance plastic made of polystyrene beehive-shaped filler material or bigodi eliminator used in fillings.



## Radial Fan Heating Heaters

The most economical heating alternative.

Commissioning of the building to shoot water heating or hot water or steam can use in your business that are available.

5.000kcal/h- 75.000kcal / h heating capacity hammerton Tough and durable painted in

14 different models,

radial fan and long-lasting. Manual air shutter adjustment.

Ceiling or wall-mounted applications.

Silent operation.

High blowing distance, 5-6 m high indoor use.

Bee Cell option. Steam and hot water pipe to connect options.



Uses: Plants,

Production Areas, hangars, warehouses, sports halls

## Axial Fan Heaters Heating

The most economical heating alternative.

Commissioning of the building to shoot water heating or hot water or steam can use in your business that are available.

4.000kcal/h- 75.000kcal / h heating capacity

14 different models.

Small volume.

Axial Fan-motor group and the protection cage painted Robust and durable and long lasting.

Manual air shutter adjustment.

Quiet operation for ceiling or wall-mounted applications.

A height of 3-4 meters for indoor use. Steam and hot water pipe to connect option



## Heat Recovery Units

Offices, businesses, hotels, living spaces, restaurants, places that require central heating and air-conditioning.

Insulated interior panel

Slim compact aesthetic design

500m<sup>3</sup> / h - 5000 m<sup>3</sup> / h of capacity

At heights, suspended ceilings can be easily mounted on the wall between them and Intervention covers all maintenance can be opened from the bottom, 70% yield 30% energy savings.





## AXIAL FANS

### \* Cooling fans

Uses: Cold storage, industrial refrigerators, cooling towers, factories, warehouses, paint shops, business centers, mills, wet / dry coolers, air cooled condensers, roof top air conditioning units, heating, cooling appliances

Capacity: 2000m<sup>3</sup>/h- 25.500m<sup>3</sup> / h

Features:

- Very quiet operation
- Diameters range from 300-800mm
- Easy installation and maintenance
- Operating performance is higher
- Operating temperature-25C - +55 C
- Devices with electrostatic powder coating
- Motor thermally protected



### \* Loose fans

- Wide range of applications
- Air Flow 500-250.000m<sup>3</sup> / h
- Pressure up to 800 Pa
- Direct coupled or belt-pulley
- Aluminum fin, hair wing, plastic wings is adjustable wing structure or Presser used as the absorbent.



### \* Ex-proof fans

GENERAL FEATURES: The explosion is used in environments where hazards such as flammability and ignition, AEX fans are manufactured in accordance with international norms.

Fan Blades are made of aluminum. Ø250 mm - Ø2000 mm range can be manufactured in different combinations of blade angle. Standard RAL9002 gray paint over the St 37.2 steel fabrication, optional, hot-dip galvanized, epoxy primer and finish coat.

APPLICATIONS: The explosion is preferred in environments where the risk of ignition and combustion. Oil refineries, gas stations, tankers, chemical and mining stocks ... Etc.

Protection measures in accordance with international norms and are equipped with elektrostatic preventing material.



### \* High-pressure fans

Uses: High pressure are preferred in places that require  
Capacity: 2900m<sup>3</sup>/h- 183.000m<sup>3</sup> / h, maximum pressure 178mmSS'dir.

Features:

- Aerodynamic structure, hair blades are manufactured from
- Direct coupled or belt-driven models are available with.



## Roof fans

### With radial extractors

Uses: Various industrial facilities, kitchens and are made for places that require efficient suction

Capacity: Flow: 500m<sup>3</sup>/h- 20.000M<sup>3</sup> / h - Pressure: 0-60mmSS,

Features: High efficiency, aesthetics can be mounted on the structure at the desired angle, low noise level is designed to require no maintenance for a long time. Direct coupled or belt-pulley can be produced.



### \* Axial Fan Exhaust Fans

Uses: Various industrial facilities, kitchens and are made for places that require effective suction.

Capacity Flow: 200m<sup>3</sup>/h- 60.000m<sup>3</sup> / h - Pressure: 0-50mmSS

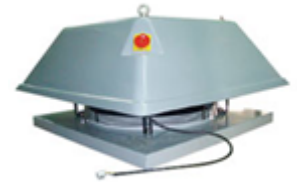
Features: High efficiency, aesthetics can be mounted on the structure at the desired angle, low noise level for a long time coupled or belt-pulley Direkt maintenance-free aluminum, plastic or hair . Hats are made of metal or plastic.



### \* Single-phase vacuum cleaners

Capacity Flow: 375m<sup>3</sup>/h- 20.000M<sup>3</sup> / h - Pressure: 0-18mmSS

Features: Vertical shot, low-power axial roof fans, external motorized mounts are light and easy, Speed switch can be installed.



## DUST COLLECTION AND FILTRATION SYSTEMS

\* Cyclone Dust cyclones in industrial plants, wood chips and particles, keeping the most preferred. Particles entering the cyclone with the air by centrifugal force is stored in the bottom collapsed.

Cylindrical form. Special purposes such as the transportation of corrosive and high temperature gases can be produced from special materials, such as in the use of hot-dip galvanized, epoxy and polyester coating of paint possible.

PCK-type cyclones are manufactured in small units and groups for large capacities (multi-cyclone), also can be produced.



### \* Filtered dry suction systems

2500m<sup>3</sup>/h- 20.000M<sup>3</sup> / h capacity, brass components, these systems are suitable for sanding and dust generated polisajlarında.



### \* Cyclone dry suction systems

2500m<sup>3</sup>/h- 20.000M<sup>3</sup> / h capacity, these systems castings, grinding and sawing operations are applied to wood and synthetics. Added to the system by ordering a filter station or you can make the filter station and the old systems can be used again.

### Mechanical vibration bag filter group

Aspirator: Special chassis, control cover, the input adapter is manufactured.

Filter group. Sub-section part of the dust collection hopper dust collection and dust collection container bags or coil air lock occurs.

Closed at the top of the cell depending on the quantity of synthetic fiber capacity in the pin-type filter bags, carrier frame, bag straps, safety chain system consists of pedestrian and.





## **FIRE SYSTEMS**

### **NFPA 20 FIRE PUMP GROUPS**

Due to the special importance of the NFPA fire pump, both material properties has brought both a standard performance features. A fire pump NFPA 20 requires compliance eat the fulfillment of these conditions. These features seem to be many differences between general purpose pumps and fire pumps are examined. Fire pumps; throughout the operating life; They are designed for the purpose of ensuring maximum reliability and net output pressure value. The design criteria of the general purpose pumps feature a maximum efficiency and economical operation

### **Hydraphores AND FIRE PUMPS**

Jockey pumps used in fire extinguishing system is kept under constant pressure during the pressure drop caused by the pipeline and to prevent illegal entry into the main pump circuit constantly aim for. 5 GPM to 75 GPM of flow from and are produced in pressure between 40 PSI to 190 PSI.

### **THE PUMP ELECTRIC CONTROL PANELS**

Electric pump control panels are designed to be wall-mounted or floor. 380 V / 3 ~ / 50 Hz voltage in 10 criteria for calculating production and between HP and 300 HP should consider the following data. Engine power poles or voltage düşümlü give way selection, automatic or semi-automatic control panel is applied.

### **DIESEL THE PUMP CONTROL PANELS**

Diesel pump control panels are designed to be wall-mounted or floor. 12 V DC and 24 V DC voltages üretilirler.uygul criteria in calculating the following data should be taken into consideration. The mains supply voltage varies with each country's standards.

### **FIRE HIDRAFOR**

Hydrants, fire-fighting and sprinkler systems for fire cabinet booster system is our purpose. NFPA - 20, VDS and TÜYAK advice according jockey pump integrated, automated testing, alarm, contact center automation system with control panels and hardware fittings are delivered basis.



## Fire Hose Cabinets

Fire cabinet is a non-automatic fire fighting equipment. It is expected to be at least the size 600x700x160 mm. A fire hydrant, 10 kgf / cm<sup>2</sup> can withstand the pressure has linen or rubber-based rubber hose.

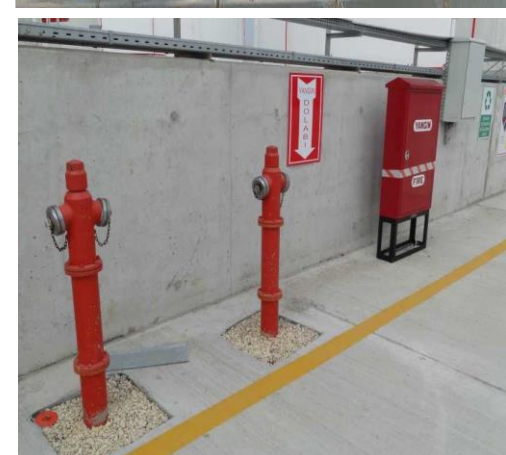
The total indoor area with high building 1000 m<sup>2</sup> large factories, workshops, warehouses, hotels, motels, health, gathering purposes and educational buildings and covered area of 2000 m<sup>2</sup> made fire cabinets in large whole building is compulsory. Each section separated by fire walls, fire cabinets on each floor and the distance between them will be held to no more than 30 m.

## HYDRANTS

Reconstruction planning area greater than 5000 m<sup>2</sup> and in hydrant system must be carried out in all sorts of areas with residential areas. □ HYDRANT DISTANCE BETWEEN DANGEROUS AREAS VERY HIGH 50 HIGH DANGEROUS AREAS 100, 125 CENTRAL DANGEROUS AREAS, LOW IS DANGEROUS AREA in 150 METRES TO BUY

## fluid is used

- Immediate intervention, there is no shock effect,
- Auto must be empty, there is no pumping event.
- Factories, warehouses, buildings and industrial plants with water in the sprinkler system, designed for the purpose is also to take water directly next to the fire brigade intervened during the fire in cities and towns.





## Sprinklers system

One of the automatic fire extinguishing system. Starting a fire is detected before departure and expansion of control, and puts out news data.

All (A) and (C) used in the class of fire. (B), (D) and (E) used in fire class.

Normally each sprinkler is closed and opens when it reaches a certain temperature. Off is an important part of the glass tube. Then expanded by fluid contained within. Robust glass tube, but the fire caused by the fires when the maximum ambient temperature increased 30C. The reflector inside the pipes with pressurized water then drained in rapid succession on fire. Simultaneously, the system is connected to the flow occur in the pipe system triggers an alarm and warning data.



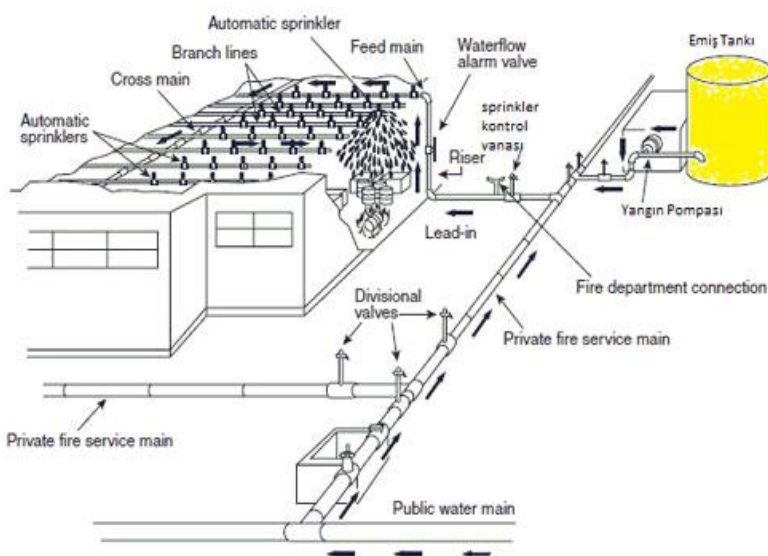
## Wet Pipe Sprinkler Systems

Pipes in wet pipe sprinkler systems are continuously maintained in the state filled with pressurized water. Not only the risk of freezing, and where the ambient temperature is applied to 95 ° C. wet sprinkler system parts in places with a risk of freezing; should follow the antifreeze system or electrical heating cables must be protected by the system.

## Dry Pipe Sprinkler Systems

Dry-pipe sprinkler systems are pressurized water system where the bottom is kept under constant pressure and dry alarm valve with compressed air or inert gas in the top of the dry alarm valve. Dry pipe systems only in places where the possibility of frost damage to the drying oven and the temperature is above 70 ° C should be applied in other locations.

Note: It is advisable not to use dry-pipe systems in high danger class applications. The first will be delayed in reaching the water to drop sprinklers can reduce system efficiency considerably.



## FOAM Fire Extinguishers

The foam concentrate based on synthetic or protein derived from mixing with water in certain proportions This is mixture of flame forming a film on the burning surface, with cuts and cooling . the contact with oxygen in the atmosphere choke and cooling effect fire finishing. Foam extinguishers in particular, to extinguish the fuel fire, explosives and to prevent the spread of flammable gas, to prevent the re-cooling the fire burning surface using .6 Lt.- 9LT. and 50lt. They are produced as



## Carbon Dioxide (CO2) Fire Extinguishers (GAS)

CO2 is a colorless, odorless and 1.5 times heavier air is a gas. Quencher into by when it becomes free full.gas under high pressure expands to about 450 times and the temperature of - 78 ° C a düşer.b lowers the temperature combustion in the environment where it is discharged at the time, reducing the amount of oxygen, on the burning material because of its weight collapse extinguishing function tamamlar.b, C class, especially Configure kullanılmalıdır.yalıtık can shine in the fire, including the fluid and electrical hazards, electronic / do not damage the electrical equipment.2Kg.-5 kg-10Kg.-30Kg. and 45kg. as they are produced.



The purpose of the installation is to provide a reliable and sufficient water to fight a fire in the plant. To do this, take the building of fire water lines and fire cabinet is established.



Manually operated fire system pipes, galvanized iron or welded black pipe with the diameter of at least 2 "to be installed. Pipe connection type varies according to the kind of pipe.

Before processing all kinds of pipes of dirt, rust and manufacturing it must be cleaned of residue after removal should be combined. Threaded fasteners used in interconnection components (of Fittings) linen ensuring sealing, Teflon or sealant should be used.



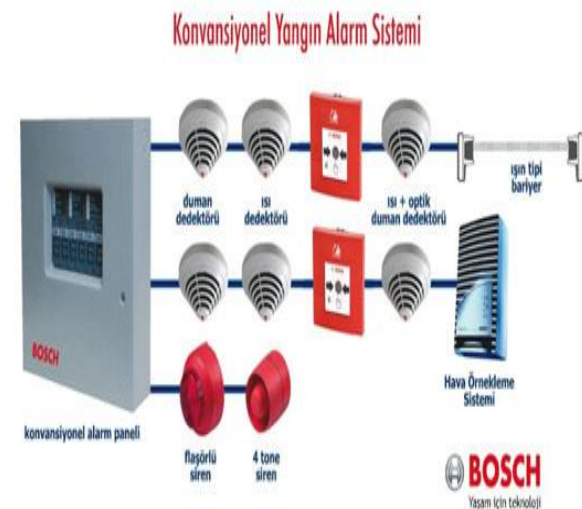
## Of CO2 gas extinguishing systems can not be MATERIALS USED

Oxygen-containing chemicals such as cellulose nitrate, potassium, sodium, magnesium, reactive metals such as titanium and zirconium, metal hydrates.

## Fire Alarm & Automation

Elements that make up the fire detection system is discussed in three parts.

Input devices: sensor detector, which alerts are sensing elements such as buttons. Evaluation unit: collects the signals from the input device, and that the necessary precautions are fire alarm control panel that controls the output unit. Output devices: sound and light warning devices, allowing devices to control other appliances are devices such as phones and devices transmit news announcement control devices. Fire detection systems are classified according to the technology assessment unit.



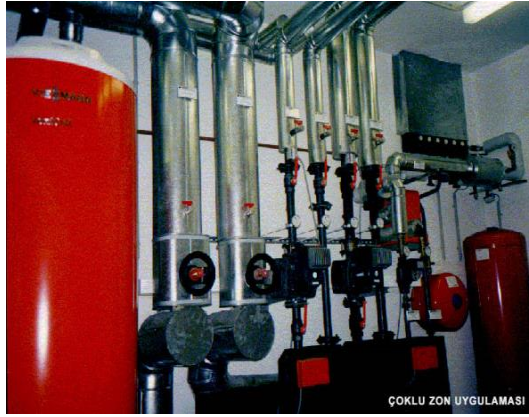
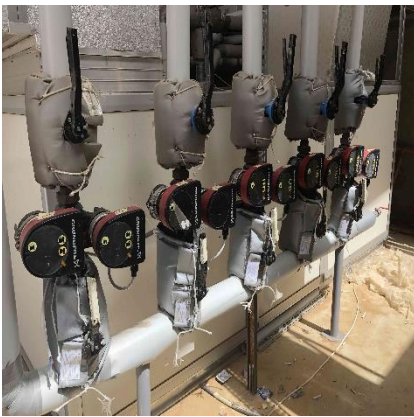


## Boiler, Boiler and Heating Systems Boiler, Boiler and Heating Systems

Managed to achieve high efficiency at low temperatures condensing type boilers, underfloor heating, especially to a 30% fuel savings of up came into prominence.

Combi-looking devices of this type of wall-hung side by side, connected (cascaded) 800 KW capacity can be used up. Low capacity (35 KW up to) self-condensing boilers with boiler models are available. Higher capacity (49-100 kW) boilers, boiler installing additional hot water needs can be met. The models used in the double-heat boiler can be coupled with solar energy system

0 KW capacity can be used up. Low capacity (35 KW up to) self-condensing boilers with boiler models are available. Higher capacity (49-100 kW) boilers, boiler installing additional hot water needs can be met. The models used in the double-heat boiler can be coupled with solar energy syste

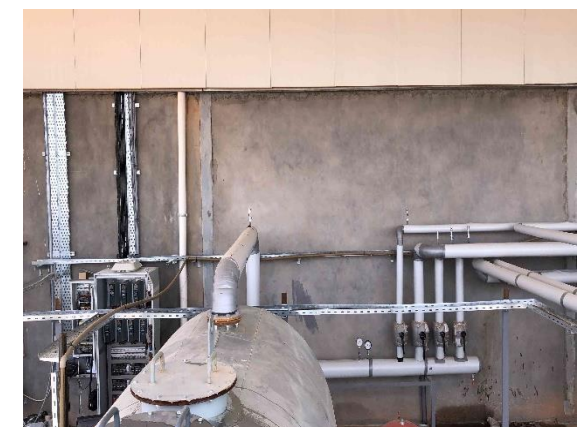




## COLD WATER INSTALLATION AND PIPING

Clean cold water installation; pipes, fittings, faucets, water meters, water reservoir, hydrofoil, ventilators and pressure regulators. Normally, clean water is fed from the city network.

Our practice places; Distribute the chilled water to the air conditioner batteries..





# Plumbing

## Fundamentals, Design and Applications

### \* Clean Water System

#### a. Potable Water

Potable water distribution

Potable water storage

Using pressurized water

#### b. Drinking Water

Storage of drinking water

Drinking water

#### c. Hot-water

Acquisition of domestic hot water

Distribution of hot water usage

Using hot water to determine the need for

Hot water heaters

Electric hot water heaters

instant heaters

Gas hot water heaters

Selection of hot water heaters

#### d. Auxiliary Elements of Water Supply Facilities

Surge absorbers

Backflow preventers

### \* Waste Water Facilities

Waste Water Drainage Components

Location filters

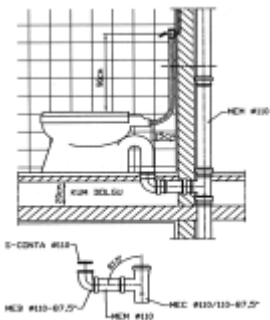
Cleaning the covers

Non-return valves for sewage

Waste water lifting systems / pumps



### \* Waste Water Systems Ventilation



#### a. Air Intake Hats

b. Ventilation Systems and Air Intake Cap Offered with a variety of solutions, unloading sewage pipes, selection and installation of measuring well-made features

1. The filthy and dirty water out of the building quickly and without any damage to health must.

2. Smell of gas and sewage pipes into the building through the insects should be avoided.

3. Pipes, air, gas and water leak.

4. Pipes are resistant not break quickly, the structure will not be damaged in a manner that does not damage the stretching and routed so that settlement.

### \* Rain Water

Roofing filters

Rain water pipes

Storm Water Drainage Components

Selection and Measurement of Rain Water Installations

Connecting directly to the sewage water sewers precipitation, rainfall will increase the amount of time the water is objectionable. Explode or overflow pipes is normal to increased volume. Or to prevent the large diameters, which are not economical.





## AUTOMATION

We are planning the project of the automation system, preparing the principle schemes, drawing the D & IDs, preparing the MCC sample panel design and electrical schemes.

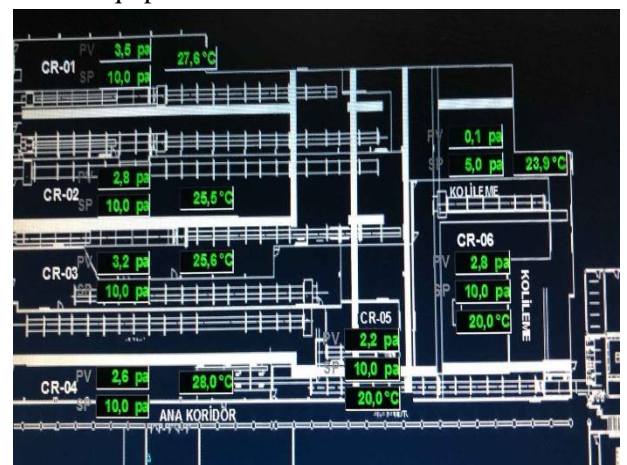
All air conditioning plants are monitored and controlled within the scope of automation. The heating and cooling valves can be controlled according to the information received from the duct type temperature and humidity sensors. Also fans, rotors, damper motors in the air handling unit are monitored and controlled. Filter and belt breaks and alarms are monitored and the air handling unit is frost protection.

In addition to air conditioning plants,

- Circulation, cooling, heating pumps
- Waste water pumps
- Fire pumps
- Duct and roof fans
- Jet fans
- Hydrophors
- Boilers, Boilers, Hydrofoils, Water Deposits
- Cooling groups are monitored and controlled from a single computer.



Special software can be integrated into the system via various protocols (BacNet, M-Bus ..), package air handling units and other equipment such as VRF, chiller. Our entire system is monitored and controlled locally over a single computer or thanks to the microcontroller and field equipments





# ENVIRONMENT AND WATER TREATMENT PLANT TECHNOLOGY

## \* Industrial Wastewater Treatment Plants

Industrial plants, factories, institutions such as organized industrial zones as a result of manufacturing processes to recover or dispose of waste water characterization of waste water according to the methods used, the differences are designed showing.

Industrial Organizations, Organized Industrial Zones, Industrial Estates, Recycling Plants, Manufacturing Plants are used as the bodies.

## \* Domestic Wastewater Treatment Plants

Vacation sites, hotels motels and bed and breakfast, Accommodation Facilities, Military Associations, Villages, Towns, Municipalities, Resorts, Recreational Camps, Farms, Residences, Factories, construction sites, public residential units and is the ideal solution for all settlements without sewerage network.

- More economical. Construction and transport easier. It does not disturb the environment, such as the human affairs.
- Installation time is very short.
- A neat aesthetic device.
- Earth movements, climatic conditions and is not affected by the earthquake.
- Treatment systems, stainless steel (chromium-nickel), and there is no problem of rust and decay.
- Stainless Steel eternal life will end, even if you need treatment for that use or sell the system can evaluate for any other purpose.
- Painting and maintenance-free.
- Operating costs are very low. Technical service and spare parts problem does.
- Concrete purification is difficult to solve the problem of sealing. Therefore, odor treatment system will make the system even though technically useful.
- Concrete treatment, there is usually underground, flooding and mechanical damage to the equipment in question.
- Concrete wastewater treatment plants, where been constructed according to the technique of water come out, Not being able to better control the construction of the missing material usage due to Lack of seal does not work well.
- Optional Package Treatment embedded in the ground. If necessary, can be replaced later.
- The best treatment technologies, the system can easily be adapted, revision possible.

## \* Package Oil Filters

- Stainless steel, carbon steel and HDPE materials, models, and there are 37 st.
- According place to be used, locations can be installed above or below ground, easy to install, suitable for DIN 4040 and 4041.
- Clean and easy to maintain.
- Solid waste holder grill basket is standard.
- net internal volume of grease volumes.
- Bulk food production facilities,
- Restaurants and cafeterias,
- Hotels, resorts,
- slaughterhouses, slaughter houses,
- Meat and fish processing plants,
- Auto repair and maintenance, cleaning services,
- All production plants using oil,
- Water treatment plants, urban waste water treatment plants.



## STAINLESS STEEL STORAGE TANKS

In touch with any of the ingredients does not corrode stainless steel is not affected. tanks made of stainless steel so it produces olive oil and food.

Tanks are usually olive oil, wine, drinking water, milk storage purposes. Storage tanks are manufactured with the quality of the food regulations and the selected materials, tanks, considering the appropriate thickness was chosen to serve in the long term.

Production Types: Rapid Manufacturing, the appropriate Special Edition, in different sizes and capacities, Models, Vertical and Horizontal different Designs



## BIOLOGICAL WASTEWATER TREATMENT EQUIPMENT STAINLESS STEEL PACKAGE

Devices are fully stainless steel (nickel crowns). Therefore device of treatment for many years been used as operate. The device yapmayacağından corrosion (rust) staining and maintenance is necessary. Extremely durable and robust. World-class manufactured by our company is made of AISI 304 stainless steel.

- Stainless Steel Body with rot Too Long Using Life
- portability Location swap
- Automatic Control
- Built-in underground soil to serve as Under (Stainless Steel)
- Appropriate for Water Output Water Pollution Control Regulation
- The speed of Activated Sludge System
- Sludge and Activated Sludge Discharge System
- Found on site, Mechanical Equipment Room
- Found on site, Purified Water Tank
- Easy to capacity building opportunities
- Garden irrigation and recycled



## Solid Waste Decomposition, Combustion, and Disposal Facilities

Thermal energy is available from the burning of inflammable substances, and thus damage to the environment be avoided. The combustion ashes can be used as fertilizer. Recycling Facility provides pollute the air, produces heat energy, economical, Location occupy, Package type.

Applications: municipalities, villages, towns, hospitals, health units, Sites, Public Houses, Settlement Areas, Industrial Estates, Chicken Farms, military units, local governments can be used safely away from the residential areas



## Medical Waste Incineration Furnaces

Applications: Medical waste disposal, Hospitals, Clinics, Universities, Municipalities, Animal Farms, Faculty of Veterinary Medicine, Medicine Disposal, Pharmaceutical Plants, Sewage sludges disposal, hazardous solid waste disposal operations.





## INFRASTRUCTURE AND PIPING

**Özgür Engineering**, perform all kinds of infrastructure in sectors where services are operating as peers. Therefore, a significant portion of the infrastructure of drinking water, waste water and rain, pipelines, manholes serve in the work spot. Our goal infrastructure systems, based on the life during construction and provide optimal solutions for the system.

High pressure natural gas lines are free from infrastructure works engineering, steel and HDPE transmission line, in-house drinking water pipelines and concrete, ductile iron pipelines are located underground or be welded electrofusion fire hydrant lines.





## Industrial Overhead Door and Door Factory

Ambient conditions, industrial sectional door systems are made from extremely durable sandwich panels.

Industrial sectional doors and loading and unloading facility on the middle level of work that requires speed, insulation is the most convenient door system in the foreground.

Inside polyurethane, outer steel or aluminum is extremely durable and long lasting coated panels are optional.

Four equipped with a side sectional doors are very tight rubber gaskets.

A standard overhead door although it does not move very fast (0.25 m / sec) with our specially designed control unit, with some bearing types 0.5 - 0.7 m / sec can be opened.

Sectional doors have a fairly robust body and provides maximum safety. Sectional doors with integrated blower systems can be used.

### Quick Brenda doors (PVC fast door)

Heavy vehicles that require traffic and indoor air conditions in places where the desired minimum level of influence from the external environment of the highly successful solutions. Thanks to its flexible PVC tarpaulin systems are extremely durable and safe system. as well as the model with flexible opening and closing fixed speed stall departure and are offered in two models.

High-speed PVC tarpaulin doors, inside is edilmet textured fabric made of high-strength PVC material. Isolation levels sectional doors so not give effective results because they cut off the air flow continuously working to the maximum extent. Both outdoors can work non-stop throughout your working hours in both the interior. High-speed PVC spiral (interior) or folding doors (outdoors), has extremely durable engine and gearbox system. If necessary, the application can provide a great isolation with sectional doors. One of the most important export products.





## PVC Strip Curtains

Europe eventually having their localities edilmekt made of PVC material. Odor, heat, cold and protect your facility from any bad weather. 200 mm, 300 mm and 400 mm. width 2,3,4 mm. They are applied in various overlay thickness. Installation is very easy with practical suspension systems and offer thousands of opportunities for change.



## Fire Doors

Fire doors, shopping malls, hotels are used in all industrial and fire escape exit. Standard door is made in view and optionally can be dyed to any color desired.

Fire doors are manufactured as single-wing and double-wing in various sizes. Located in the corridor can be opened emergency exit doors with panic bars optional systems. Evacuation can easily open the door and escape is easy, thanks to the region's fast during the panic bar. bi-fold doors to the evacuation of the crowded area should be preferred.

Fire doors to the needs of the plant used for 60, 90 and 120 min.

They are manufactured with strength. Fire doors and smoke-tight ribbed spring hinges can be switched automatically. Special design allows the blades can be easily changed direction.

Separate from the other two venues are just closing fire doors during Spiral fire. Which can be up to 4 hours fire resistance of steel rolling shutters especially chemicals, paint and fire systems with high sensitivity are important industrial facilities.



## Spiral Fire Doors

separate from the other two venues are just closing fire doors during Spiral fire. Which can be up to 4 hours fire resistance of steel rolling shutters especially chemicals, paint and fire systems with high sensitivity are important industrial facilities.





## REFERENCE

### MALL

- ✓ **CARREFOUR-SA ADANA Alışveriş Merkezi**  
Yalıtımlı Alüminyum Klima Kanalları Malzeme Satışı ve Süpervizörlük Hizmetleri
- ✓ **CARREFOUR-SA İZMİT Alışveriş Merkezi**  
Yalıtımlı Alüminyum Klima Kanalı Satışı ve Süpervizörlük Hizmeti
- ✓ **CARREFOUR-SA ÜMRANİYE Alışveriş Merkezi**  
Yalıtımlı Alüminyum Klima Kanalı Satışı ve Süpervizörlük Hizmeti
- ✓ **CARREFOUR-SA BURSA Alışveriş Merkezi**  
Yalıtımlı Alüminyum Klima Kanalı Satışı ve Süpervizörlük Hizmeti
- ✓ **CARREFOUR-SA ANKARA Alışveriş Merkezi**  
Yalıtımlı Alüminyum Klima Kanalı Satışı ve Süpervizörlük Hizmeti
- ✓ **CARREFOUR-SA KADIKÖY Nautilus Alışveriş Merkezi**  
Yalıtımlı Alüminyum Klima Kanalı Satışı ve Süpervizörlük Hizmeti
- ✓ **METRO Alışveriş Merkezi**  
Ofis kısımları Klima Sistemi Rehabilitasyonu İkitelli - İSTANBUL
- ✓ **OFFICE – 1 Superstore**  
Yalıtımlı Hava Kanalı Malzeme Satışı ve Süpervizörlük Hizmetleri Maslak - İSTANBUL
- ✓ **YİMPAŞ Alışveriş Merkezi**  
Yalıtımlı Hava Kanalı İmalat ve Montajı- ADANA
- ✓ **GİMSA Marketler Zinciri**  
Yalıtımlı Alüminyum Klima Kanalı Satışı ve Süpervizörlük Hizmeti - ANKARA
- ✓ **DİASA Eğitim Merkezi**  
Yalıtımlı Alüminyum Klima Kanalı İmalat ve Montajı Seyrantepe - İSTANBUL

### BUSINESS CENTER

- ✓ **TÜRK TELEKOM Genel Müdürlük Binası**  
Yalıtımlı Alüminyum Klima Kanalı İmalat ve Montajı Gayrettepe - İSTANBUL
- ✓ **BORUSAN KÜLTÜR SANAT Merkezi**  
Yalıtımlı Alüminyum Klima Kanalı İmalat ve Montajı Beyoğlu - İSTANBUL
- ✓ **ING Bankası Genel Müdürlük Binası**  
Yalıtımlı Hava Kanalı İmalat Montajı Maslak - İSTANBUL
- ✓ **BANK EKSPRES -Yeni İdare Binaları**  
Yalıtımlı Hava Kanalı İmalat ve Montajı İstinye – İSTANBUL
- ✓ **BİRLEŞİK FON BANKASI - İdare Binası**  
Eti-2 Binası Havalandırma Tesisatı İmalat Montajı Beylikdüzü - İSTANBUL
- ✓ **AKBANK**  
\*Bahçekapı Şubesi Mekanik Tesisat Montajı  
\*Suadiye Şubesi Mekanik Tesisat Montajı  
\*İzmit Şubesi Mekanik Tesisat Montajı  
\*Maltepe Şubesi Mekanik Tesisat Montajı
- ✓ **YURT BANK**  
Yalıtımlı Alüminyum Klima Kanalı Montajı Gayrettepe - İSTANBUL
- ✓ **IGDAŞ İdare Binası**  
Yalıtımlı Hava Kanalı İmalat ve Montajı Alibeyköy -İSTANBUL
- ✓ **ENKA**  
Yalıtımlı Alüminyum Klima Kanalı ve Kanallı Split Montajı Balmumcu - İSTANBUL
- ✓ **MERKEZ BANKASI İdare Binası**  
Hava Kanalları Temizliği ANKARA
- ✓ **PROCTER&GAMBLE Genel Müdürlük Binası**  
Hava Kanalları Temizliği GEBZE
- ✓ **BP GENEL Müdürlük Binası**  
Hava Kanalları Temizliği İSTANBUL
- ✓ **S.P.K. MERKEZ Binası**  
Yalıtımlı Alüminyum Klima Satışı ve Süpervizörlük Hizmeti ANKARA
- ✓ **USAŞ**  
Uçak Servisi A.Ş. Yükleme Platformu Klima Tesisatı Montajı, Yeşilköy - İSTANBUL  
Uçak Servisi A.Ş. Esenboğa İkram Ünitesi Klima Tesisatı ESENBOĞA – ANKARA





- ✓ **GÜNEŞ SİGORTA Genel Müdürlüğü**  
Yalıtımlı Hava Kanalı ve Soğutma Cihazları Montajı ANKARA
- ✓ **DİLER HOLDİNG Yönetim Binası**  
Yalıtımlı Alüminyum Klima Kanalı İmalat ve Montajı İSTANBUL
- ✓ **ÇALIK HOLDİNG Yönetim Binası**  
Yalıtımlı Alüminyum Klima Kanalı İmalat ve Montajı İSTANBUL
- ✓ **YUMATU Televizyon Fabrikası İdari Binası**  
Yalıtımlı Alüminyum Klima Kanalı Montajı İkitelli - İSTANBUL
- ✓ **CITIBANK Genel Müdürlük**  
Yalıtımlı Alüminyum Klima Kanalı İmalatı ve Montajı Gayrettepe - İSTANBUL
- ✓ **NADİN COLLECTION Plaza İdari Bina**  
Mekanik Tesisat İmalat ve Montajı İSTANBUL
- ✓ **ŞEN SAC FABRİKASI İdari Bina**  
Yalıtımlı Alüminyum Klima Kanalı İmalat ve Montajı İSTANBUL
- ✓ **LI-FUNG Genel Müdürlük Binası**  
Yalıtımlı Alüminyum Klima Kanalı İmalatı ve Montajı Kanallı Split Montajı İSTANBUL
- ✓ **AHMET MERT İş Merkezi**  
Yalıtımlı Alüminyum Klima Kanalı İmalat ve Montajı Ümraniye - İSTANBUL
- ✓ **SERPİL Gömlekleri Satış Mağazaları**  
*Yalıtımlı Alüminyum Klima Kanalı Montajı İSTANBUL*
- ✓ **DORUK ISI**  
Yalıtımlı Alüminyum Klima Kanalı İmalat ve Montajı KONYA
- ✓ **KADİR HAS ÜNİVERSİTESİ**  
Yalıtımlı Alüminyum Klima Kanalı Satışı ve Süpervizörlük Hizmeti Unkapanı – İSTANBUL
- ✓ **İHLAS PAZARLAMA BÖLGE Müdürlüğü**  
Yalıtımlı Hava Kanalı ve Soğutma Cihazları Montajı - İSTANBUL
- ✓ **İSTEK VAKFI Semiha Şakir Lisesi**  
Yalıtımlı Alüminyum Klima Kanalı Satışı İSTANBUL
- ✓ **İSTEK VAKFI Kemal Atatürk Lisesi**  
Yalıtımlı Alüminyum Klima Kanalı Satış İSTANBUL
- ✓ **FEM DERSANELERİ**  
Yalıtımlı Alüminyum Klima Kanalı İmalat ve Montajı Ümraniye - İSTANBUL
- ✓ **ÇAMLICA HUZUREVİ**  
Yalıtımlı Alüminyum Klima Kanalı İmalatı ve Montajı İSTANBUL
- ✓ **MARKA REKLAMEVİ**  
Yalıtımlı Alüminyum Klima Kanalı İmalat ve Montajı Maslak - İstanbul
- ✓ **YOUNG & RUBICAM REKLAM EVİ**  
Yalıtımlı Hava Kanalı ve Tekstil Hava Kanalı İmalat ve Montajı Şişli - İSTANBUL
- ✓ **MAS MATBAACILIK**  
Hava Kanalları Temizliği İSTANBUL
- ✓ **İZMİT OTOGAR'I**  
Yalıtımlı Alüminyum Klima Kanalı Montaj
- ✓ **İNGİLTERE BAŞKONSOLOSLUĞU**  
Galvaniz Sac Kanal, Kanal İzolasyon Malzemeleri Satışı İSTANBUL

## **HOSPİTALS**

- ✓ **KIRKLARELİ Devlet Hastanesi**  
Yalıtımlı Alüminyum Klima Kanalı İmalat ve Montajı KIRKLARELİ
- ✓ **ERZURUM NUMUNE Hastanesi**  
Yalıtımlı Alüminyum Klima Kanalı İmalat ve Montajı ERZURUM
- ✓ **KOCATEPE Üniversitesi Hastanesi**  
Yalıtımlı Alüminyum Klima Kanalı İmalat ve Montajı AFYON
- ✓ **GATA HAYDARPAŞA Hastanesi**  
Klima Sistemi İmalat ve Montajı İSTANBUL
- ✓ **AMERİKAN HASTANESİ**  
2 Borulu ve 4 borulu Spilotair İndüksiyon Cihazı Satışı İSTANBUL
- ✓ **İSTANBUL MİKROCERRAHİ HASTANESİ**  
Yalıtımlı Alüminyum Klima Kanalı İmalat ve Montajı İSTANBUL



## **FACTORY**

- ✓ **ENKA TEKNİK Obari Elektrik Santrali**  
Yalıtımlı Alüminyum Hava Kanalı İmalat ve Montajı – Obari LİBYA
- ✓ **EREĞLİ Demir Çelik İşletmeleri**  
Yalıtımlı Hava Kanalı İmalat ve Montajı - Ereğli
- ✓ **TÜPRAŞ Rafinerisi**  
Yalıtımlı Alüminyum Klima Kanalı Montajı Aliağa - İZMİR
- ✓ **ÜLKER BİSKUVİ Fabrikası**  
Hava Soğutmalı Kondenser Grubu Sistem İmalat ve Montajı Topkapı - İstanbul  
Yalıtımlı Hava Kanalı İmalat ve Montajı Topkapı – İSTANBUL
- ✓ Bakır Boru ve Pvc Boru Montajı Topkapı - İstanbul
- ✓ **ÜLKER BİSKUVİ Fabrikası**  
Hava Soğutmalı Kondenser Grubu Sistem İmalat ve Montajı Akyurt –Ankara  
Yalıtımlı Hava Kanalı İmalat ve Montajı Akyurt –Ankara  
Bakır Boru ve Pvc Boru Montajı Akyurt –Ankara
- ✓ **ÜLKER ÇİKOLATA -1 Fabrikası**  
Yalıtımlı Hava Kanalı İmalat ve Montajı Topkapı - İSTANBUL
- ✓ **ÜLKER BAYCAN Sakız Fabrikası**  
Yalıtımlı Hava Kanalı İmalat ve Montajı Avcılar - İSTANBUL
- ✓ **ÜLKER ÇİKOLATA Fabrikası Depo**  
Yalıtımlı Alüminyum Klima Kanalı İmalat ve Montajı - ANKARA
- ✓ **ÜLKER HERO Gıda Fabrikası**  
Havalandırma Isıtma – Soğutma Sistem İmalat ve Montajı - ANKARA  
Yalıtımlı Alüminyum Klima Kanalı İmalat ve Montajı  
Paslanmaz Hava Kanalı İmalat ve Montajı  
Tekstil Hava Kanalı İmalat ve Montajı  
Galvaniz Hava Kanalı İmalat ve Montajı
- ✓ **ÜLKER C.C.C Gumlink Sakız Fabrikası**  
Yalıtımlı Hava Kanalı İmalat ve Montajı ÇORLU
- ✓ **ÜLKER DELLA GIDA**  
Yalıtımlı Alüminyum Klima Kanalı İmalat ve Montajı AKYAZI
- ✓ **ÜLKER TEKNOLOJİK Depo**  
Yalıtımlı Alüminyum Klima Kanalı İmalat ve Montajı - BAYRAMPAŞA
- ✓ **ÜLKER ÇİKOLATA -2 Fabrikası Toz Tesisleri**  
Mekanik Tesisat İmalat ve Montajı - TOPKAPI
- ✓ **ÜLKER ÇİKOLATA -2 Fabrikası Hamurhane**  
Yalıtımlı Alüminyum Klima Kanalı İmalat ve Montajı - TOPKAPI
- ✓ **ÜLKER ÇİKOLATA -3 Fabrikası**  
Galvaniz Hava Kanalı İmalat ve Montajı - TOPKAPI
- ✓ **ÜLKER İDEAL Gıda Fabrikası**  
Paslanmaz Hava Kanalı ve Tekstil Hava Kanalı İmalat ve Montajı - GEBZE
- ✓ **ÜLKER BİSKUVİ Fabrikası**  
Yalıtımlı Hava Kanalı ve Tekstil Klima Kanalı İmalat ve Montajı -TOPKAPI
- ✓ **ÜLKER BAYCAN Şeker Tesisi Fabrikası**  
Yalıtımlı Hava Kanalı İmalat ve Montajı İSTANBUL
- ✓ **ÜLKER BAYCAN Yeni Jeli Tesisi Fabrikası**  
Yalıtımlı Hava Kanalı İmalat ve Montajı İSTANBUL
- ✓ **ÜLKER FRESH CAKE Fabrikası**  
Yalıtımlı Hava Kanalı ve Tekstil Klima Kanalı İmalat ve Montajı –HADIMKÖY
- ✓ **C.C.C Gumlink Depo Bölümü**  
Yalıtımlı Hava Kanalı İmalat ve Montajı ÇORLU
- ✓ **C.C.C Gumlink Sakız Fabrikası**  
Munters Nemlendirme Cihazı - ÇORLU  
Yalıtımlı Hava Kanalı İmalat ve Montajı ÇORLU
- ✓ **ÜLKER ANADOLU GIDA A.Ş.**  
AIRMIXING Perfore PVC Klima Kanal Satışı ANKARA





- ✓ **ÜLKER BİSKOT 2 Kek ve Bisküvi Fabrikası**  
Yalıtımlı Hava Kanalı İmalat ve Montajı - KARAMAN  
Tekstil Hava Kanalı İmalat ve Montajı - KARAMAN  
Sistem Otomasyonu İmalat ve Montajı – KARAMAN  
Klima Santalleri İmalat ve Montajı - KARAMAN  
Hava Perdeleri Montajı – KARAMAN
- ✓ **ÜLKER MİSBİS ÇİKOLATA Fabrikası**  
Yalıtımlı Hava Kanalı İmalat ve Montajı - SELİMPAŞA  
Tekstil Hava Kanalı İmalat ve Montajı - SELİMPAŞA  
Galvaniz Hava Kanalı İmalat ve Montajı – SELİMPAŞA  
Spiro Yuvarlak Hava Kanalı İmalat ve Montajı – SELİMPAŞA
- ✓ **ÜLKER BAYCAN Mutfak ve Şeker Tesisi**  
Yalıtımlı Hava Kanalı İmalat ve Montajı İSTANBUL  
Havalandırma Santrali Bağlantı Mekanik Tesisatı ve İzolasyonu İSTANBUL
- ✓ **ENKA TEKNİK Kağıt Torba Fabrikası**  
Yalıtımlı Alüminyum Hava Kanalı İmalat ve Montajı - LİBYA
- ✓ **DOĞUŞ OTOMOTİV**  
PP Hava Kanalı İmalat ve Montajı – Gebze
- ✓ **ELVAN GIDA Çikolata Fabrikası A.S**  
Yalıtımlı Hava Kanalı İmalat ve Montajı Yenibosna – İstanbul
- ✓ **ELVAN GIDA Şeker Fabrikası A.S**  
Yalıtımlı Hava Kanalı İmalat ve Montajı Sefaköy – İstanbul
- ✓ **ELVAN GIDA CİCİ Çikolata Fabrikası A.S**  
Yalıtımlı Hava Kanalı İmalat ve Montajı Eskişehir  
Paslanmaz Hava Kanalı ve İzolasyonu İmalat ve Montajı Eskişehir
- ✓ **NESTLE Gıda Karacabey Fabrikası**  
Yalıtımlı Hava Kanalı ve Tekstil Klima Kanalı İmalat ve Montajı – BURSA
- ✓ **ALBARAKA KEK Fabrikası**  
Hava Soğutmalı Kondenser Grubu Sistem İmalat ve Montajı Tripoli – LİBYA  
Taze Hava Klima Santralleri ve Kompakt Hücreli Aspiratörler Tripoli - LİBYA  
Yalıtımlı Hava Kanalı İmalat ve Montajı Tripoli - LİBYA  
Bakır Boru ve Pvc Boru Montajı Tripoli – LİBYA
- ✓ **SAHEL AL AKHDAR MAKARNA Fabrikası**  
Hava Soğutmalı Chiller Grubu Sistem İmalat ve Montajı Tripoli – LİBYA  
Soğutmalı ve Taze Hava Klima Santralleri ve Kompakt Hücreli Aspiratörler Tripoli - LİBYA  
Yalıtımlı Hava Kanalı İmalat ve Montajı Tripoli - LİBYA  
Kazan , Pompa , Sıcak ve Soğuk Su Boruları ve İzolasyon Montajı Tripoli – LİBYA
- ✓ **SAHEL AL AKHDAR TAVUK KULUÇKA Fabrikası**  
Hava Soğutmalı Chiller Grubu Sistem İmalat ve Montajı Tripoli – LİBYA  
Soğutmalı ve Taze Hava Klima Santralleri ve Kompakt Hücreli Aspiratörler Tripoli - LİBYA  
Yalıtımlı Hava Kanalı İmalat ve Montajı Tripoli - LİBYA  
Kazan , Pompa , Sıcak ve Soğuk Su Boruları ve İzolasyon Montajı Tripoli - LİBYA
- ✓ **TÜRKİYE ATOM ENERJİ TESİSİ**  
Proton Hızlandırma Tesisi PVC Hava Kanalı İmalat ve Montajı – Ankara
- ✓ **ASELSAN**  
PP Hava Kanalı İmalat ve Montajı – Ankara
- ✓ **FRİTOLAY GIDA Rusya Fabrikası**  
Tekstil Klima Kanalı İmalat ve Satışı
- ✓ **BAYER İlaç Fabrikası**  
Yalıtımlı Alüminyum Klima Kanalı İmalat ve Montajı - GEBZE
- ✓ **ERICSSON TESİSLERİ**  
Yalıtımlı Alüminyum Klima Kanalı İmalat ve Montajı Gölbaşı - ANKARA
- ✓ **MUSTAFA NEVZAT İlaç Fabrikası**  
Yalıtımlı Alüminyum Klima Kanalı İmalat ve Montajı – İSTANBUL
- ✓ **GILETTE Fabrikası**  
Hava Kanalı ve Soğutma Tesisatı İmalat ve Montajı İSTANBUL
- ✓ **BEKO LG Klima Fabrikası**  
Yalıtımlı Alüminyum Klima Kanalı İmalat ve Montajı Gebze



- ✓ **İBRAHİM ETHEM İlaç Fabrikası**  
Steril Sahalar Yalıtımlı Alüminyum Kanal Sistemi İmalat ve Montajı  
Hammadde Deposu ve Steril Sahalar Yalıtımlı Hava Kanalı İmalat ve Montajı – İSTANBUL
- ✓ **ARÇELİK Fabrikası**  
Yalıtımlı Alüminyum Klima Kanalı İmalat ve Montajı – Çayırova
- ✓ **LEVI'S Fabrikası**  
Tekstil Hava Kanalı İmalat ve Montajı - ÇORLU
- ✓ **BSH PROFİLO Fabrikası**  
2 Adet Boya Kabini Havalandırması – ÇERKEZKÖY
- ✓ **PROFİLO FABRİKASI**  
Yalıtımlı Alüminyum Klima Kanalı İmalat ve Montajı ÇERKEZKÖY
- ✓ **MADO DONDURMA Fabrikası**  
Yalıtımlı Hava Kanalı ve Tekstil Klima Kanalı İmalat ve Montajı - K.MARAŞ
- ✓ **BANVİT**  
Tavuk Üretim Bölümü Tekstil Hava Kanalı - BANDIRMA
- ✓ **BANVİT**  
Tavukçuluk Tesisi Tekstil Hava Kanalı – BANDIRMA
- ✓ **BANVİT**  
Yalıtımlı Alüminyum ve Air Mixing Perfore PVC Klima Kanalı İmalat ve Montajı - Bandırma
- ✓ **TAMEK**  
Yalıtımlı Alüminyum Hava Kanalı İmalatı ve Montajı - Karacabey
- ✓ **AYTAÇ GIDA**  
Tekstil Hava Kanalı Satışı – ÇANKIRI
- ✓ **ÖZGE PLASTİK Fabrikası**  
Yalıtımlı Alüminyum Klima kanalı İmalat ve Montajı- İSTANBUL
- ✓ **SERLOG MEZZAMİN**  
Yalıtımlı Hava Kanalı İmalat ve Montajı – İSTANBUL
- ✓ **AVERY DENNISON ETİKET Fabrikası**  
Yuvarlak Hava Kanalı İmalat ve Montajı - ÇORLU
- ✓ **EKSTRA METAL**  
Galvaniz Klima Kanalı İmalat ve Montajı Sincan - ANKARA
- ✓ **MANNESMAN**  
DKP Siyah Sac Klima Kanalı İmalat ve Montajı ADAPAZARI
- ✓ **BETEK BOYA A.Ş.**  
Spiral Hava Kanalı İmalat ve Montajı Gebze - İSTANBUL
- ✓ **MİMSA ALÜMİNYUM Fabrika Binası**  
Mekanik Tesisatı İmalat ve Montajı BEYLİKDÜZÜ / İST.
- ✓ **MODEGA Tekstil San. A.Ş.**  
Yalıtımlı Alüminyum Kanal Sistemi İmalat ve Montajı Seyrantepe - İSTANBUL
- ✓ **PC Poliüretan A.Ş.**  
Yalıtımlı Alüminyum Kanal Sistemi İmalat ve Montajı Hadımköy - İSTANBUL
- ✓ **ASPEN YAPI Malzemeleri**  
Yalıtımlı Alüminyum Klima Kanalları Haramidere – İSTANBUL
- ✓ **ARDEM**  
Klimatize Kabin Yalıtımlı Alüminyum Klima Kanalı Montajı BOLU
- ✓ **GOLDAŞ Altın İşleme Atölyesi**  
Yalıtımlı Alüminyum Klima Kanalı Montajı Merter - İSTANBUL
- ✓ **KİSİSAN LTD.**  
Yalıtımlı Alüminyum Klima Kanalı Montajı İkitelli -İSTANBUL
- ✓ **PANATEK**  
Yalıtımlı Alüminyum Klima Kanalı Montajı Göztepe – İSTANBUL
- ✓ **ARMA FİLTRE**  
Yalıtımlı Alüminyum Klima Kanalı İmalat ve Montajı ADAPAZARI
- ✓ **SUN TEKSTİL**  
Yalıtımlı Alüminyum Klima Kanalı Satışı BURSA
- ✓ **MERKEZ Laboratuvarı**  
Yalıtımlı Alüminyum Kanal Sistemi İmalat ve Montajı Çekmeköy - İSTANBUL
- ✓ **NORTHRUP Tohumculuk Fabrikası**  
Toz Toplama Sistemi İmalat ve Montajı Çorlu - TEKİRDAĞ





## TV

- ✓ **KANAL E-Televizyon Stüdyosu**  
Yalıtımlı Hava Kanalı İmalat ve Montajı Beyazıt - İSTANBUL
- ✓ **SHOW TV**  
Yalıtımlı Hava Kanalı İmalat ve Montajı İSTANBUL
- ✓ **KANAL D ANS Televizyon Stüdyoları**  
Yalıtımlı Alüminyum Klima Kanalı İmalat ve Montajı İSTANBUL

## SPORTS CENTER AND SCHOOL

- ✓ **ENKA Sadi Gülçelik Spor Tesisleri Kapalı Yüzme Havuzu**  
Yalıtımlı Hava Kanalı İmalat ve Montajı İstinye/İSTANBUL
- ✓ **ENKA Okulları İlave Bina**  
Komple Isıtma ve Yangın Sistemi İstinye/İSTANBUL
- ✓ **ÖZEL AMERİKAN ROBERT KOLEJİ**  
Hava Soğutmalı Kondenser Grubu Sistem İmalat ve Montajı Ulus - İstanbul
- Yalıtımlı Hava Kanalı İmalat ve Montajı Ulus - İSTANBUL
- ✓ **AZERBEYCAN Yüzme Havuzu**  
Tekstil Hava Kanalı Satışı BAKÜ
- ✓ **EFES PİLSEN KAPALI SPOR SALONU**  
Perfore PVC Kanal Montajı İSTANBUL
- ✓ **ENKA Sadi Gülçelik Spor Tesisleri Yüzme Havuzu**  
Yalıtımlı Hava Kanalı İmalat ve Montajı İstinye - İSTANBUL
- ✓ **GETS Tesisat Ümraniye Kapalı Yüzme Havuzu**  
Yalıtımlı Hava Kanalı İmalatı İSTANBUL
- ✓ **İTÜ Avm Sosyal Tesis Binası**  
Isıtma Sistemleri ve Kazan Dairesi İstinye/İSTANBUL

## RESTAURANT AND CAFE

- ✓ **İSTANBUL BÜYÜKŞEHİR BELEDİYESİ YENİ GALATA KÖPRÜSÜ**  
Restaurant Mutfakları Davlumbaz Galvanizli Hava Kanalı İmalat ve Montajı İSTANBUL
- ✓ **İSTANBUL BÜYÜKŞEHİR BELEDİYESİ YENİ GALATA KÖPRÜSÜ**  
Sumbit Binası Galvanizli Hava Kanalı İmalat ve Montajı İSTANBUL
- ✓ **MC DONALD'S**  
Yalıtımlı Alüminyum Klima Kanalı Satışı ve Süpervizörlük Hizmeti Taksim - İSTANBUL
- ✓ **MEETING PLACES Cafe Pastane**  
Isı geri kazanım cihazı Gazimağosa / KKTC
- Yuvarlak Kanal imalat ve montajı Gazimağosa / KKTC

## VİLLA

- ✓ **TERKOS Durusu Villaları**  
Yalıtımlı Hava Kanalı Malzeme Satışı İSTANBUL
- ✓ **RAKS HOLDİNG Villaları**  
Yalıtımlı Alüminyum Klima Kanalı Satışı İSTANBUL
- ✓ **ENTERNASYONEL KUMKÖY VİLLA ve SOSYAL TESİSLER**
- ✓ Mekanik Tesisat ve Havalandırma Projesi İSTANBUL
- ✓ **FESTİVAL OTEL**  
Mekanik Tesisat ve Havalandırma Projesi İSTANBUL
- ✓ **ÖZDEMİR SABANCI YALISI**  
Hava Kanalları Temizliği İSTANBUL
- ✓ **M.Dora Villası**  
Kapalı Yüzme Havuzu Yalıtımlı Alüminyum Klima Kanalı İmalat ve Montajı Gaziosmanpaşa - ANKARA
- ✓ **DİNÇ BİLGİN Villası**  
Yalıtımlı Alüminyum Klima Kanalı Montajı Sarıyer - İSTANBUL
- ✓ **ÜÇEM İNŞAAT**  
10 adet villa kanallı Split Cihaz ve Yalıtımlı Alüminyum Klima Kanalı İmalat ve Montajı YALOVA
- ✓ **EREN TALU MİMARLIK**  
Yalıtımlı Alüminyum Klima Kanalı İmalat ve Montajı BODRUM
- ✓ **YEŞİLKÖY KONAKLARI**  
Kanallı Split ve Yalıtımlı Alüminyum Klima Kanalı İmalat ve Montajı Yeşilköy - İSTANBUL

# Endüstride, Ticari ve Özel Konutlarda Isıtma, Havalandırma, Soğutma Çözümleri!...

[www.ozgurmuhendislik.com](http://www.ozgurmuhendislik.com)



**Amerikan Hastanesi**



**Türk Telekom**



**Borusan Kültür Merkezi**



**Yeni Galata Köprüsü**



**Ülker Teknolojik Depo İstanbul**



**Ülker Hero Baby**



**Gata Tıp Hastanesi**



**Ülker Teknolojik Depo Ankara**



**Alüminyum Fabrikası**

Meşrutiyet Mah Buket Sok No : 9 D : 6 34363 Nişantaşı İstanbul  
Tel : + 90 212 291 10 28 / 29 Faks : + 90 212 291 95 49  
[ozgurmuhendislik@ozgurmuhendislik.com](mailto:ozgurmuhendislik@ozgurmuhendislik.com)